

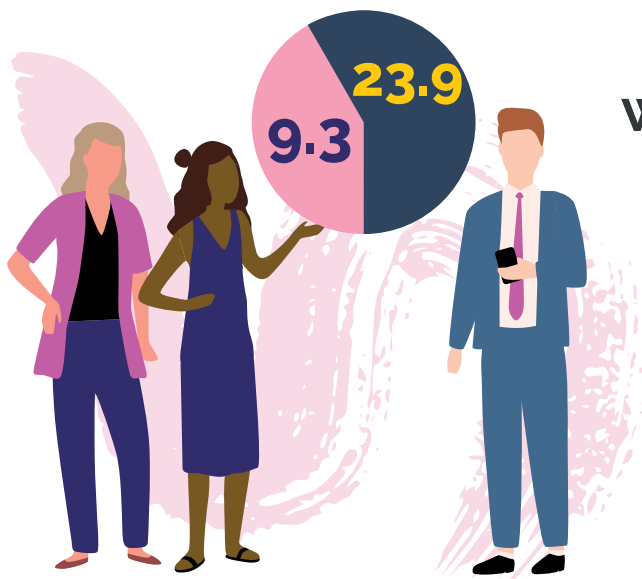
Workplace bullying

National data

There were 2,280 work-related harassment and/or workplace bullying compensation claims in 2017-18



The median time away from work due to workplace bullying claims in the same period was 14.8 weeks.



The frequency rates of workers' compensation claims for harassment and/or bullying made by **female employees (23.9)** were more than twice the rates of these claims made by **males (9.3)** over the three years 2016-17 to 2018-19 combined.

The industry groups with the highest frequency rates of work-related harassment and/or workplace bullying, 2016-17 to 2018-19 combined were **public safety services**, **residential care services** and **civic, professional, and other interest group services**.

