

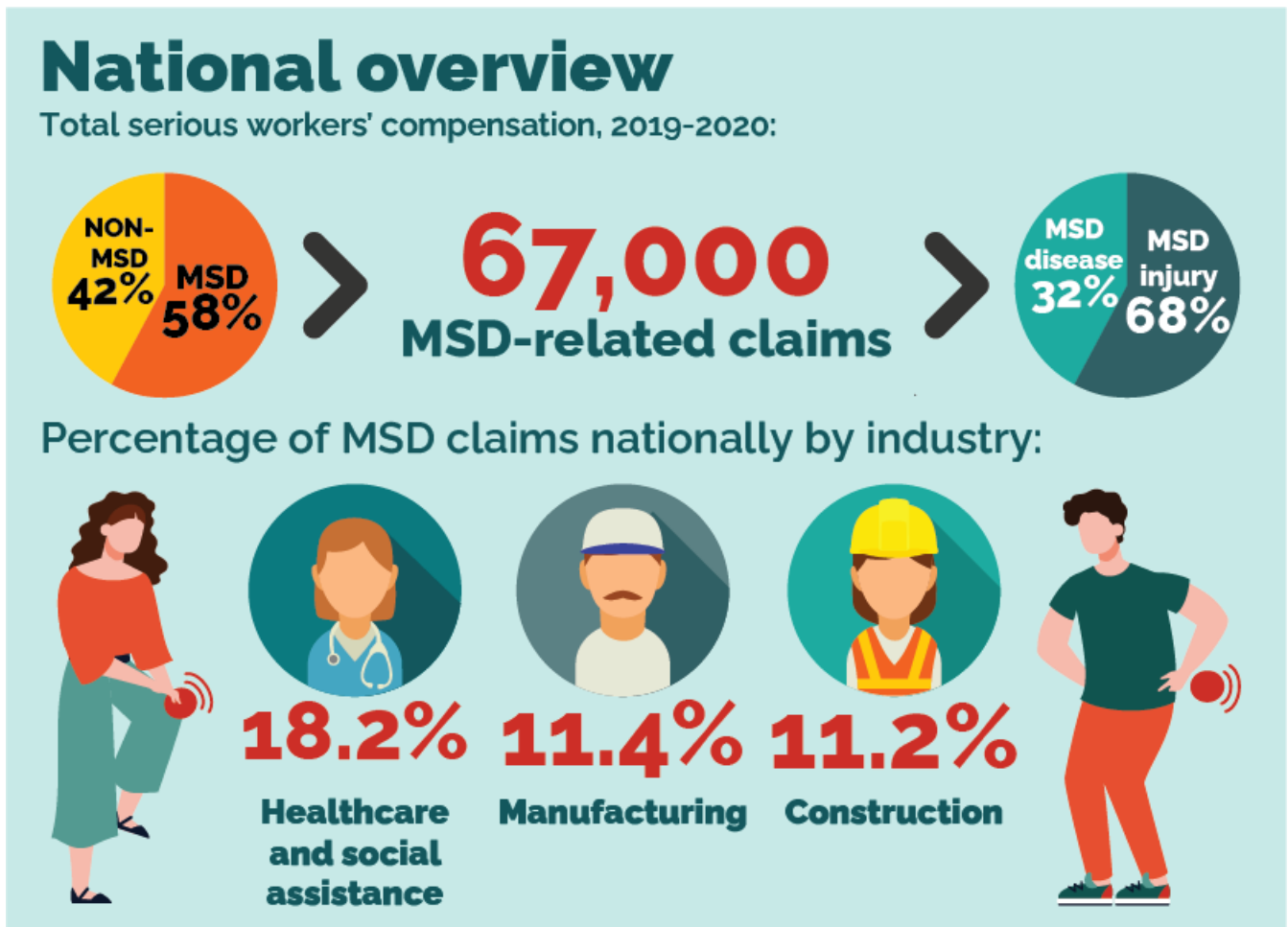
MUSCULOSKELETAL DISORDERS

Musculoskeletal disorders (MSDs) include a wide range of inflammatory and degenerative conditions affecting the muscles, tendons, ligaments, joints, peripheral nerves and supporting blood vessels.

In Safe Work Australia's (SWA) National Dataset for Compensation-Based Statistics, MSDs are categorised into traumatic joint/ligament and muscle/tendon injuries (MSD injuries) and musculoskeletal and connective tissue diseases (MSD diseases).

NATIONAL DATA

The economic and health burden of work-related MSDs in Australia is significant. In 2012-2013 the estimated cost of work-related MSDs to the Australian economy was more than \$24 billion (SWA 2019: 8).

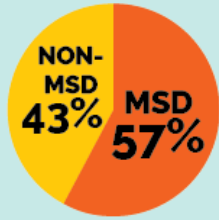


Source: SWA (Safe Work Australia) (2021a) Key work health and safety statistics, Australia 2021; SWA (2019) Work-related musculoskeletal disorders in Australia 2019.

ACT DATA

ACT overview

Accepted MSD workers' compensation claims, 2017/18-2020/21:



8,000
MSD-related claims



Source: Workplace Safety and Industrial Relations Division, Chief Minister, Treasury and Economic Development Directorate (private sector and ACPTS claims only)

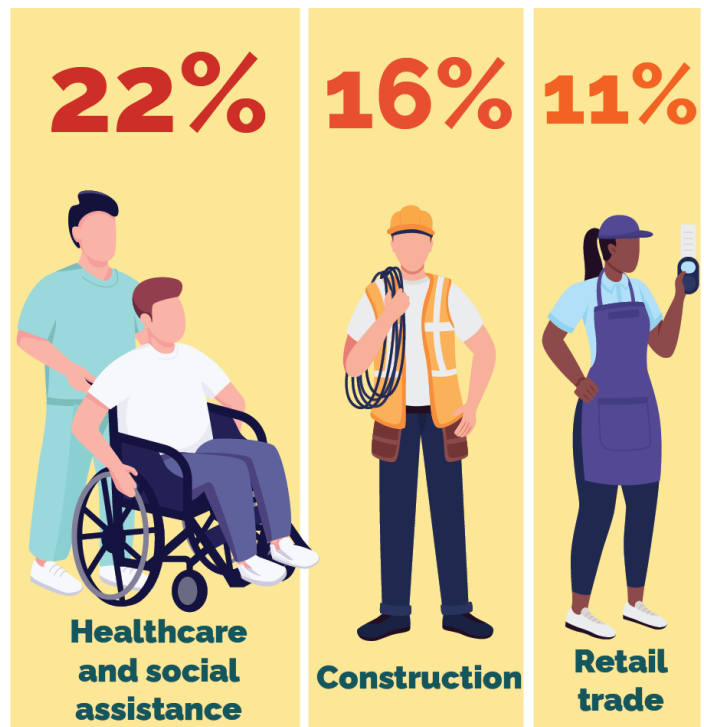
ACT DEMOGRAPHIC SNAPSHOT

Between 2017-18 and 2020-21, more accepted MSD claims in the ACT were made by men than by women:

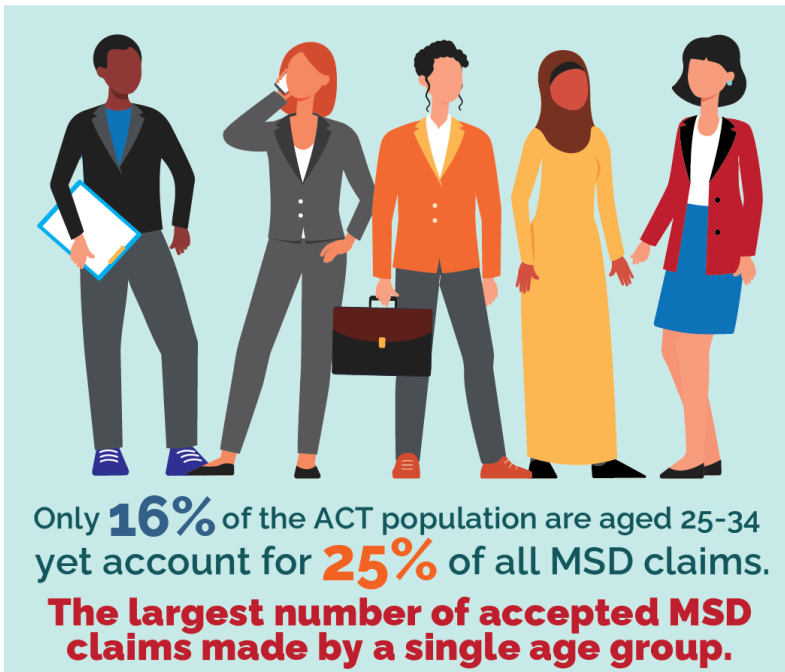


Source: Workplace Safety and Industrial Relations Division, Chief Minister, Treasury and Economic Development Directorate (private sector and ACPTS claims only)

In the ACT, the industries with the greatest number of accepted MSD claims between 2017-18 and 2020-21 were:

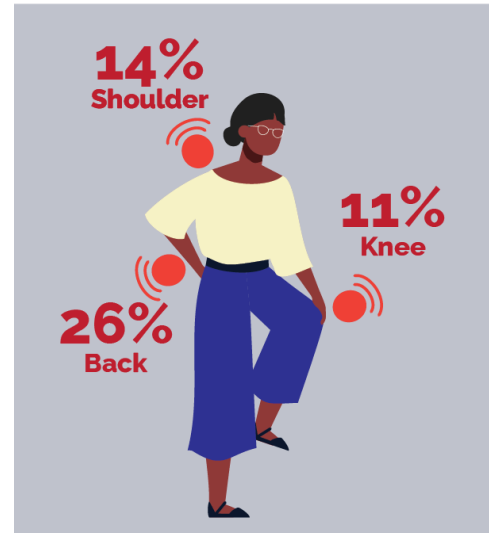


Source: Workplace Safety and Industrial Relations Division, Chief Minister, Treasury and Economic Development Directorate (private sector and ACPTS claims only)



Source: Workplace Safety and Industrial Relations Division, Chief Minister, Treasury and Economic Development Directorate (private sector and ACPTS claims 2017/18 - 2020/21 only); ABS2021b.

The most common bodily locations of MSD injury and disease were:



Source: Workplace Safety and Industrial Relations Division, Chief Minister, Treasury and Economic Development Directorate (private sector and ACPTS claims only)

WORKSAFE ACT'S RESPONSE

In May 2022 WorkSafe ACT released its *Strategy to Prevent Work-Related Musculoskeletal Disorders 2022-2024*. The Strategy outlines WorkSafe ACT's approach to preventing MSDs in workplaces.

The WorkSafe ACT General Inspectorate team conducted several campaigns in the retail industry throughout 2021 and 2022 focused on addressing MSD hazards. Up until May 2022, WorkSafe ACT Inspectors have conducted over 180 workplace visits, checking for MSD hazards, reviewing workplace MSD policies and procedures, and discussing MSD risks with workers and persons conducting a business or undertaking (PCBUs).

PCBU AND WORKER RESOURCES

- SafeWork NSW – [Musculoskeletal Disorder \(MSD\)](#)
- WorkSafe Queensland – [Musculoskeletal Disorders Frequently Asked Questions](#)
- Safe Work Australia – [MSD Resources](#)

NOTES:

- A serious workers' compensation claim is an accepted claim resulting in a total absence from work of one working week or more.

REFERENCES

ACT claims data provided by Workplace Safety and Industrial Relations Division, Chief Minister, Treasury and Economic Development Directorate (private sector and ACPTS claims only).

SWA (Safe Work Australia) (2021a) [Key work health and safety statistics, Australia 2021](#), accessed 19 April 2022.

SWA (2021b) [Australian workers' compensation statistics 2019-20](#), accessed 20 April 2022.

SWA (2020) [Explanatory notes: national data set for compensation-based statistics for Safe Work Australia](#), accessed 19 April 2022.

SWA (2019) [Work-related musculoskeletal disorders in Australia 2019](#), accessed 20 April 2022.

SWA (2016) [Statistics on work-related musculoskeletal disorders 2016](#), accessed 19 April 2022.

SWA (2008) [Type of occurrence classification system \(TOOCS\) 3rd Edition May 2008](#), accessed 19 April 2022.

ABS (Australian Bureau of Statistics) (2022) [Employed Persons by State, Territory and Industry Division of Main Job \(ANZSIC\)](#), accessed 19 April 2022.

ABS (2021a) [ANZSCO - Australian and New Zealand Standard Classification of Occupations, 2021](#), accessed 20 April 2022.

ABS (2021b) [National, State and Territory Population Tables, June 2021](#), accessed 20 April 2022.

ABS (2016) [2016 Census QuickStats: Australian Capital Territory](#), accessed 19 April 2022.

WORKSAFE.ACT.GOV.AU